

# Wright POOLS & SPAS

## Reducing Environmental Impact



### Package Solutions for a Sustainable Pool

Our world is changing. At Wright Pools & Spas we want to offer interventions on swimming pool installations that can help reduce environmental impact.

This means saving power, water, chemicals and giving you the opportunity for your pool to be the most eco-friendly it can be.

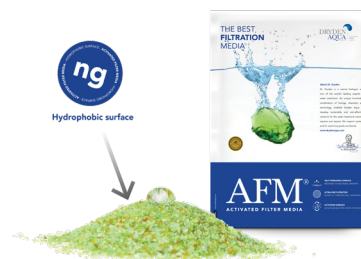
### The Best High-Performance Media for your Filter using Activated Filter Media - AFM@ng

- Substantially lowers chlorine oxidation demand by up to 50%...less chlorine used & generated
- Removes organics and microplastics...cleaner water
- Lowers backwash demand by average of 50%...less water loss
- Is expected to last the lifetime of the filtration system
- Uses recycled glass specifically manufactured for highly effective filtration (certified to 1micron) and 100% bio-resistance

*For more information: [www.drydenaqua.com](http://www.drydenaqua.com)*

We always have and will continue to recommend and install media-based filters

- Cartridge filters do not filter to the same level as AFM media. They are also frustratingly difficult to clean so most people either end up paying for a service company to come and clean them or they just get ignored until they need to be replaced. Cartridge filters are invariably sold by pool companies that just install the pool and go, offering no ongoing service so they don't have to deal with the fallout. Installing a cartridge filter often means no backwash line is needed so to retro-fit a good media filter at a later date can sometimes be very difficult.

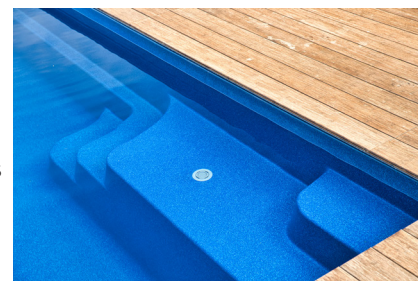


### Vantage in-Floor Self Cleaning System

- A unique and patented system in Compass Pools for keeping your pool clean of debris
- No brushing or vacuuming which takes considerable time
- Reduces chemical use
- Enhances circulation from bottom to top...no cold spots and no dead spots where algae & bacteria traditionally grow...cleaner and healthier water

*For more information:*

*<https://www.compasspools.com.au/vantage-in-floor-cleaning/>*



### Using Variable Speed Pool Pumps on Vantage and Pool Circulation Systems

- Circulation & filtration are by far the two most important determining factors in keeping your pool clean and safe
- Optimal operating of a pool pump warrants a lower flow mode for circulation & filtration and a higher flow mode for backwashing. A variable speed pump enables customisation of these parameters alongside the pump speed to suit individual pool sizes (volumes & distances from pump shed) and other user requirements.
- Quieter operation
- Reduced power consumption

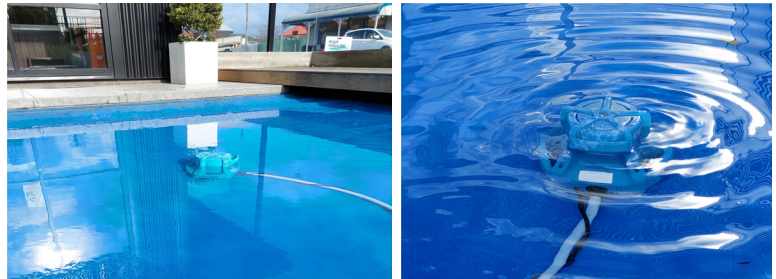
## Larger Diameter Plumbing

- Using larger diameter suction pipes (65mm) rather than traditional (50mm) dramatically reduces the workload of the pump
- Quieter running due to lower chance of cavitation and motor design
- Lower power usage whilst achieving better filtration quality
- Better backwash



## Harvesting Rainwater from the Electric Cover & Storage Tank(s)

- An electric cover provides a seal between the swimming pool and environment. When it rains, there is a large surface area on which water collects. Why waste this? It can be pumped into a water tank if desired.
- Using rainwater is best for a pool as the dissolved solids level are very low and there are no metals – always a possible issue especially during summer when water may come from bores
- If you are not on a meter now you probably will be in the next few years. Zero ongoing cost for water
- Hose pipe bans mean you are not meant to fill or top up your pool. Storing the water collected from your cover means you can top up your pool whenever it is required. Any excess can be used for your garden



## Latest Technology Inverter Heat-Pump

- The new generation in efficiency. These heat pumps combine efficient inverter compressors with advanced electronics and fan design to produce a swimming pool heat pump like no other
- Lower running costs
- Wi-Fi control capability via app enabling remote functionality
- Smaller physical size
- Super quiet



## Latest Generation Salt Chlorinators

- An often-standard inclusion into most pools we install, the eEquilibrium salt chlorinator which is highly reliable and utilizes low concentrations of salt, also known as sodium chloride (NaCl) which gets inexpensively converted to chlorine for highly effective pool water sanitation
- An automated process maintains chlorine at an ideal level of 1-2 ppm
- Pool water pH is maintained via an integral and automated acid feed. Without this, the pH rises and requires regular manual dosing
- We use and sell NZ sourced salt from the Marlborough Sounds
- We do not recommend Magnesium salt. It is very expensive, still produces chlorine using the same mechanism as traditional salt, is imported from overseas and has no credible evidence to support the claims made – just marketing. Magnesium cannot be absorbed via the skin (Grober et al, Myth or Reality – Transdermal Magnesium? Nutrients. 2017 Aug; 9(8): 813.)

In addition to the componentry described above, we strive to provide our customers with as many eco-friendly and sustainable options for pools, spas and accessories. We have already installed a totally off-grid Compass Self-Cleaning Pool with electric cover & heat pump and continue to work with the customer to evaluate progress. Our business plan is as sustainable as possible. We are investing in solar power at our Wairarapa shop, rain from our roof and pool cover to fill our pool. Our staff are from the local community and we have begun in the electrification of our vehicle fleet.

51 Rutherford Street, Lower Hutt • T: 04 5684884 • E: swimspas@poolsandspas.co.nz  
403 High Street, Lower Hutt • T: 04 570 0547 • E: info@poolsandspas.co.nz  
156 High Street North, Carterton • T: 06 379 6645 • E: wairarapa@poolsandspas.co.nz